



Newsletter

Heber Primary School

Heber Road, London, SE22 9LA

t: 020 8693 2075

w: heberprimaryschool.com

e: adminoffice@heber.southwark.sch.uk

twitter : @heberschool

Heber Book Week 2025

Issue number: 21 Friday 21st March 2025

As always, Book Week at Heber is a fantastic celebration of our children's love of learning! Children across the school, from Nursery to Year 6, all enjoyed reading our whole school text 'The Midnight Panther' by Poonam Mistry. This fable follows the story of a Panther who feels like he doesn't belong, so tries to change himself by becoming more like the other big cats in the rainforest. He is told by Wind, Rain and Sun that he doesn't need to change. He then meets the Moon who gives him the confidence to see himself for what he truly is - a midnight Panther and accepts himself for who he is. Children across the school wrote their own fables inspired by this text. A highlight of book week was our dress up day where children showcased their favourite book characters or came to school in pyjamas. Buddy Reading was also enjoyed by all!



EYFS

The Midnight Panther was the perfect text for our current theme of Animals. The children were fascinated by the story and loved acting as the big cats from the story. We created a class collage of the black panther and using our gross motor mark making skills to create a jungle background. The children created their own black panther masks and made their own Indian inspired artwork, just like Poonam's illustrations in the book.



KS1

We had quite a bit of a surprise when we came to school on Monday! There were paw prints everywhere! Some even had inspirational messages written on like "I believe in you!" It turns out the Midnight Panther had come to visit and our teachers shared his wonderful story with us. It was a fable about the importance of being ourselves. We explored the book through art and drama and wrote our own poems about the Midnight Panther. We were so inspired that we wrote our own fables about an animal that had to learn what made them special and unique. We loved Book Week as we got to do so many fun activities: we had mystery readers visiting our classrooms; we had buddy reading with an older class; we even got to do a creative carousel of activities with the other Key Stage 1 teachers.



Newsletter

Heber Primary School

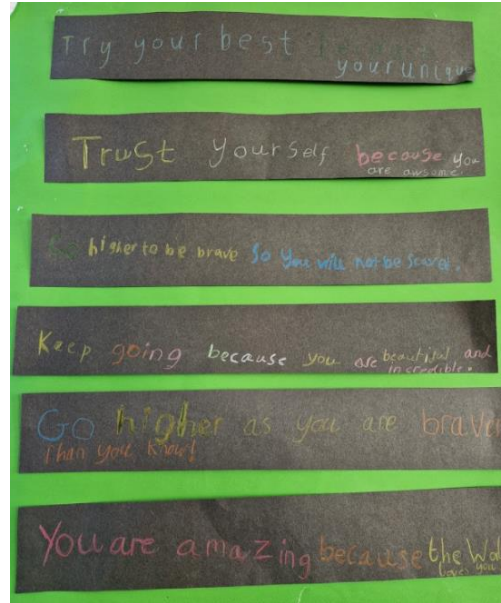
Heber Road, London, SE22 9LA

t: 020 8693 2075

w: heberprimarschool.com

e: adminoffice@heber.southwark.sch.uk

twitter : @heberschool



KS2

Key Stage Two children enjoyed a day of carousel activities where they worked with the different teachers in their phase on some book themed tasks.

In Year 5 and 6 the children made book marks with Miss Branch, experienced a reading cafe with Ms Farrelly, drew the front cover of a book based on the blurb with Mr Adams and took part in a reading quiz with Miss Kleywegt!

In Year 3 and 4, the children took part in a book quiz with Ms Hastings, designed their own book covers with Ms Rose, made origami bookmarks with Ms Walker and created portals to other worlds with Ms Darby.

Warmer days are upon us!

It was good to see the Nursery sand pit coming out of hibernation over the last few weeks! Much fun was had by all (including Mrs Jefford!)





Newsletter

Heber Primary School

Heber Road, London, SE22 9LA

t: 020 8693 2075

w: heberprimaryschool.com

e: adminoffice@heber.southwark.sch.uk

twitter : @heberschool

This week in Art and Music...

I am excited to announce a 'SPRING EGG DESIGN' competition this week.

I am asking children to bring in a small polystyrene egg (or similar) decorated in an *eggciting* and artistic way. These will be displayed in the school office entrance.

There will be a small prize for a winner from each class. Please remember to add a name label to your child's egg design. Children can use paint, glitter, feathers, pens or whatever they would like to decorate the eggs. Even better if they have a ribbon to hang it too.

Please bring in your egg designs from Monday 24 March and I will leave a box for collection in the Art room (or alternatively keep in their classroom until next Wednesday).

This is an optional competition. Here are a few *eggsamples!*



Year 1 had a fabulous lesson trying out Yayoi Kusama pumpkin designs this week.

Year 6 are planning a group 3D poster for our 'Sustain Our Environment' topic. Please could I ask that you save and bring in any plastic bottles tops and small plastic drinks bottles.

Year 5 made some wonderful Nature inspired print designs. Just to inform you that Year 5 will also be visiting Dulwich Park to sketch 'en-plein'air' next Thursday 27 March (5B) and Thursday 3 April (5K) in their afternoon art session. They will be back at the usual time to be dismissed as normal from school.

I would like to invite Year 4 parents in for an informal 'open classroom' to see what children have been learning and creating this term in their 'Music in Art' topic. Please come to the art room from 3.45pm on Thursday 2 April. This is an optional invitation in which you will be able to view your child's sketchbook and creations should you wish.





Newsletter

Heber Primary School

Heber Road, London, SE22 9LA

t: 020 8693 2075

w: heberprimaryschool.com

e: adminoffice@heber.southwark.sch.uk

twitter : @heberschool



House Points	Rigal	Mycroft	Valdez	Ndume
				
This Week	599	595	597	603
Total	5705	5695	5686	5698

Stars of the Week

Congratulations to the following children who were chosen as the Star of the Week for demonstrating our school values:

RC	Keita	RH	Imogen
1C	Charlie	1V	Sophia
2CP	Agnes	2S	Earl
3R	Magnus	3W	Hattie
4DL	Joe	4H	Vida
5B	Ena	5K	Ainhoa
6A	Amelie	6F	Jack B

Academic Excellence Awards

In our Merit Assembly we celebrated the successes of a child from each class, who excelled in their learning and produced some outstanding work. Well done to the following children:

RC	Alicia	RH	Raphael
1C	Libby	1V	Lila
2CP	Arda	2S	Clara
3R	Albie	3W	Emmanuella
4DL	Eliza	4H	Sade
5B	Lauron	5K	Carney
6A	Louie	6F	Molly



Newsletter

Heber Primary School

Heber Road, London, SE22 9LA

t: 020 8693 2075

w: heberprimaryschool.com

e: adminoffice@heber.southwark.sch.uk

twitter : @heberschool

Heber SEND Tips

This week's tip is about: EHCPs and SEN support

There have been a lot of items in the news lately about potential changes to EHCPs and SEN reform across the country. Please be aware that currently, this is all speculation and there have been no changes announced or proposed just yet. It is important to be aware of that when identifying Special Educational Needs, the framework specifies 4 areas of need where a child may present with difficulties:

Cognition and Learning: which may include mild learning difficulties (MLD), severe learning difficulties (SLD) or profound and multiple learning difficulties (PMLD) where children may require varying support to access their learning as well as specific learning difficulties (SpLD)

Communication and Interaction: which may include difficulties speaking, understanding or communicating as well as autism spectrum conditions

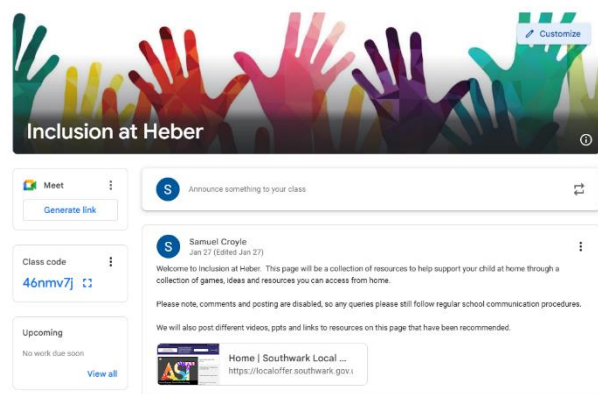
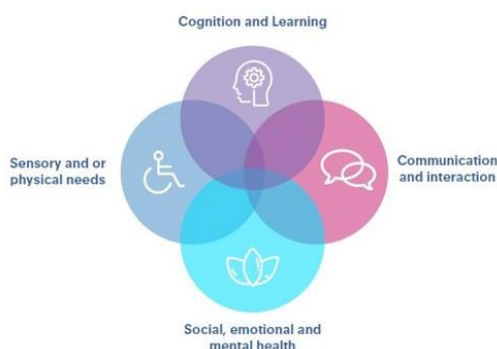
Social, Emotional and Mental Health difficulties: which may include a range of mental health difficulties such as anxiety, depression, eating disorders or physical symptoms which are medically unexplained

Physical and Sensory: which may include a physical disability (PD) which hinders their ability to access standard provision - this may also include visual impairment (VI), hearing impairment (HI) or a multi-sensory impairment (MSI)

To reassure you, at Heber we follow the below overview to ensure that all educational needs are met. This is in correspondence with Southwark guidance. Additionally, we also host a number of Parent Workshops, SEN specific interventions and regular staff training throughout the year.

Steps	Identification of needs	Qualify First Teaching	External advice	Additional SEN based intervention	Further support is required- EHCP process started
Process	Parent or staff raise a concern	SEN specific strategies and Learning Plan are implemented in the classroom	Progress continues to be slower than desired	Wider view of child's needs taken into account as barrier for learning and day to day processes	Multi-agency meeting with families, other professionals as appropriate
Actions	SENCo will meet with parent/teacher to gain more information	School monitor progress and effectiveness Class based interventions and Booster groups may take place	More specialist intervention may be requested e.g. Speech and Language	SEN specific intervention take place addressing areas of need	EHCPNA process is started with school

There is also our resource on Google Classroom, which contains a wealth of information and activities with details shared below. You can access via your child's Google Classroom login.





Newsletter

Heber Primary School

Heber Road, London, SE22 9LA

t: 020 8693 2075

w: heberprimaryschool.com

e: adminoffice@heber.southwark.sch.uk

twitter : @heberschool

March

Monday 24 th	3W trip to London Wetlands Centre
Monday 24 th – Wednesday 26 th	Year 5 Residential
Tuesday 25 th	3R Class Assembly 2S trip to The Monument
Wednesday 26 th	1V Postal Museum
Thursday 27 th	RH trip to The Wildlife Centre
Friday 28 th	Perform Drama Workshops (Nursery – Year 1)
Saturday 29 th	P&F Heber 5 a side Football Tournament
Monday 31 st – Friday 4 th April	Swimming (Years 3 & 4)
Monday 31 st	2CP trip to The Monument

April

Tuesday 1 st	4DL Class Assembly (9.15am)
Thursday 3 rd	P&F Spring Egg hunt (during school hours)
Friday 4 th	Last day of term – 2pm finish
Monday 7 th – Monday 21 st	Easter Holidays
Tuesday 22 nd	Children return to school
Tuesday 22 nd – Friday 25 th	Careers Week
Friday 25 th April	Get Rid of & Donate
Monday 28 th -Friday 2 nd May	STEAM Week

May

Friday 2 nd	P&F Coffee morning
Monday 5 th	May Day Bank Holiday – school closed
Tuesday 6 th	4H trip to the Wetlands Centre
Thursday 8 th	4DL trip to the Wetlands centre
Friday 9 th	Year 1 Animal Workshop
Monday 12 th – Friday 16 th	Year 6 SATS Week
Monday 12 th	The Two Johns Parent workshop (Internet Safety) – 6pm
Wednesday 14 th	Class Photos
Thursday 15 th	P&F Quiz night
Monday 19 th	Heber's International Week
Monday 19 th	RSHE Consultation meeting for parents
Tuesday 20 th	2S Class Assembly (9.15am) Year 4 Cricket at Alleyn's
Thursday 22 nd	Year 5 Cricket at Alleyn's
Friday 23 rd	Year 6 Cricket at Alleyn's Heber International Evening Get Rid of & Donate
Monday 26 th – Friday 30 th	Half term holidays