

**HEBER**

PRIMARY SCHOOL

*All belong, all achieve.*

**HEBER PRIMARY SCHOOL**

**Drugs and Alcohol Policy  
(Education and Drug Related Incidents)**

## 1. Key contacts

Drugs and Alcohol Education Lead: Lyndsey Jefford  
Governing Body Committee: SCFC

## 2. Definition of drugs

The term “drugs” refers to all drugs including medicines, volatile substances (glue, gases and aerosols), alcohol, tobacco and illegal drugs (cocaine, cannabis, heroin etc).

## 3. The purpose of the policy

We recognise the harm that all drugs can have, be they illegal (cocaine, cannabis, heroin etc) legal (alcohol, cigarettes and solvents) or medicines. We aim, through this policy, and its guidelines to provide clear and consistent procedures, which promote safety and good management.

## 4. Aims

- \* To help young people resist drug misuse in order to achieve their full potential in society
- \* To promote and safeguard health and safety of pupils and staff within the school
- \* To provide a hierarchy of sanctions, for different levels of severity for different drug related incidents
- \* To endorse a range of learning and supportive responses for those involved in an incident
- \* To encourage an environment where a supportive response to incidents is not undermined by an unduly punitive response
- \* To ensure this policy is fully implemented and disseminated to ensure understanding and adopting for all of those connected with the school; pupils, parents, teachers, governors and auxiliary staff.

## Drug and Alcohol Education

### 5. Content and Organisation of the Education Programme

Timetable allocation: Three 60 minute lessons

Groupings: Mixed sex lessons from Years 1 to Years 6

The Drugs and Alcohol Education lessons will be delivered by the class teacher and other outside visitors e.g. school nurse. Where outside visitors help to deliver Drugs and Alcohol Education they are not there to replace teachers but to enrich existing programmes by supporting the school.

Lessons will be taught during a Health and Well Being week or a subject specific week. E.g. A Science Week  
The school will be using the Christopher Winter Project Scheme of Work for Drugs and Alcohol Education

### Year 1: Medicines and People Who Help Us

#### Learning Objectives:

- To identify how to stay healthy
- To explore when and how to take medicines safely
- To identify who should be able to give us medicine

### Year 2: Keeping Safe

#### Learning Objectives:

- To explore substances and situations that are safe or unsafe
- To be able to identify some hazardous substances
- To consider safety rules for at home and at school

### **Year 3: Smoking**

#### Learning Objectives:

- To consider smoking and its effects
- To understand the impact of smoking and passive smoking
- To know some strategies to prevent starting smoking

### **Year 4: Alcohol**

#### Learning Objectives:

- To understand the effect alcohol has on the body
- To understand the risks related to drinking alcohol
- To consider how society limits the drinking of alcohol

### **Year 5: Legal and Illegal Drugs**

#### Learning Objectives:

- To explore a range of legal and illegal drugs, their risks and effects
- To have considered the children's attitudes and beliefs about drug use and drug users
- To have considered strategies to resist drug use

### **Year 6: Preventing Early Use**

#### Learning Objectives:

- To understand the effects, risks and law relating to cannabis
- To understand the risk of volatile substance abuse (VSA)
- To be aware of the options for getting help, advice and support

- Teachers will set a group agreement to ensure that an atmosphere is created where pupils feel able to discuss concerns and feelings.
- It should be recognized that questions from pupils will be addressed and dealt with in the most appropriate manner and not disregarded. The form in which questions are addressed may be in group activities, or on a one-to-one basis, as appropriate.
- The school nurse backs up information on Drugs and Alcohol working with the class teachers. They can also provide links with primary care services such as local clinics.
- Resources will be assessed to ensure that they are appropriate to the age and maturity of pupils. They will take into account equality of opportunity through their use of language, cultural attitudes and images, avoiding stereotyping, racism and sexism.
- In every section of the course a variety of teaching and learning styles are used including videos, information sheets, pamphlets, textbooks, visual aids and models, games, role-play and interactive CD ROMS.

The school will provide monitoring data to the Local Authority, on content and effectiveness of Drug education in line with the National Drug Strategy reporting process.

## **6. Assessing Drugs and Alcohol Education and Monitoring the Programme**

The Drugs and Alcohol Education Lead will be responsible for:

- Ensuring the policy and programmes are implemented as agreed
- Supporting staff to assess pupils' progress
- Recommending targets for whole school development

The programme will be evaluated by assessing the attitudes of the pupils, the development of their personal skills and the knowledge and understanding they have gained. Review forms part of the content and is an ongoing process. The views of pupils, staff and parents will be sought and taken into account as the programme develops and changes.

## **7. Training staff to deliver Drugs and Alcohol Education**

It is important that staff delivering Drugs and Alcohol Education work within the values framework of this policy and feel confident, skilled and knowledgeable to deliver effective Drugs and Alcohol Education. Continuing professional development will be provided through a range of options: individual study and development/ in-house CPD/ external training courses. Training could include:

- What to teach and when
- Leading discussions about attitudes and values
- Information updates
- Practising a variety of teaching methods
- Facilitating group discussions
- Involving pupils in their own learning
- Managing sensitive issues

## **8. Working with Parents/Carers**

On entry to the school, parents will be invited to read the Drugs and Alcohol Education policy. This helps to establish consultation and a partnership with parents, which reinforces the dual responsibility for Drugs and Alcohol learning. Parents are kept informed about the content of the programme.

We will take every opportunity to inform and involve parents/carers:

1. By making our commitment clear
2. By inviting parents/carers to discuss personal development when their child enters the school
3. By inviting parents/carers to a meeting to discuss Drugs and Alcohol Education in the school.

## **Drug Related Incidents**

### **9. Managing Drug Related Incidents Procedure**

Our definition of drug includes medicines, alcohol and tobacco it is therefore important that all aspects of an incident are considered. The needs and circumstances of the pupils are paramount.

We will consider each situation individually and recognise that a variety of actions in response may be necessary to drug related incidents as recommended by: DfE and ACPO drug advice for schools:

<https://www.gov.uk/government/publications/drugs-advice-for-schools>

If the situation leads to a medical emergency the school emergency aid procedures will be followed immediately.

In the absence of a medical emergency the Deputy Head and Head Teacher will be informed and an appropriate response considered. We will refer to the *DfE and ACPO drug advice for schools* on responding to drug related incidents and in determining the response the implications of any action we take will be carefully considered. The focus of any response will be the student not the substance and we will seek to balance the interests of the individual, other members of the school community and the wider community.

Please refer to the policy flowcharts for guidance on how to handle specific incidents.

Responses will be cross-referenced with related school policies such as:

- Behaviour
- Health and Safety
- Child Protection
- School Visits

Unless there are exceptional circumstances we will inform parents /carers at the earliest opportunity so that we can work together to support the pupil and to resolve difficulties.

We have a range of professional colleagues who can give or obtain advice and support in drug or alcohol related situations. These include the school's Education Welfare Officer, the local Police Liaison Officer, members of the local Youth Offending Team (whose roles include supporting young people at risk of offending) our local Drug and Alcohol agencies and counselling services. These colleagues can help with a needs assessment and support us in developing an appropriate response. The pupil/s will always be told when information is being passed on, in accordance with the school's policy on confidentiality.

Our aim is to enable all pupils to fulfill their potential. We will work with the pupil, their parents or carers and colleagues from other agencies to remove barriers to achievement and resolve any difficulties that exist. Drug related situations will be considered alongside other circumstances in the young person's life and not in isolation. We accept that it is never appropriate to respond in a way that is more punitive than that which might be considered by the police so that exclusion, whilst it remains an option, will be used as the very last resort.

Should a substance suspected of being illicit be found on the school premises it will be handed to the headteacher and, in the presence of another member of staff placed in a sealed container in the school safe until it can be delivered to or collected by a police officer. S/he will also be involved in advising the school on the most appropriate response to the situation. The Local Authority School Drug Adviser and Drug & Alcohol Action Team are also able to provide guidance and advice.

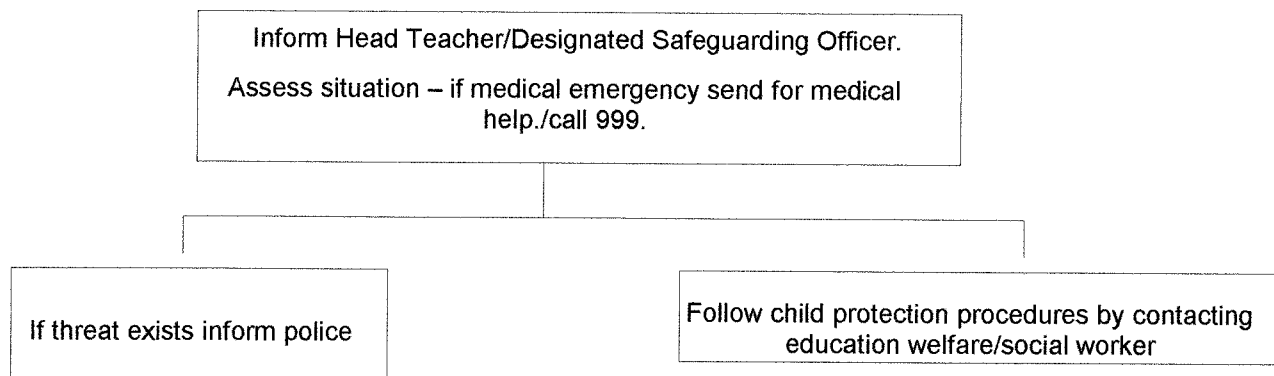
All staff will be made aware of the legal constraints on gathering evidence and questioning those involved.

Please refer to the policy flowcharts for guidance on how to handle specific incidents.

## **10. Smoking Statement**

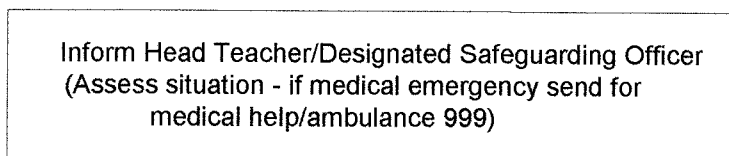
Smoking is not allowed on the school site.

### Adults under the influence of drugs or alcohol on school premises

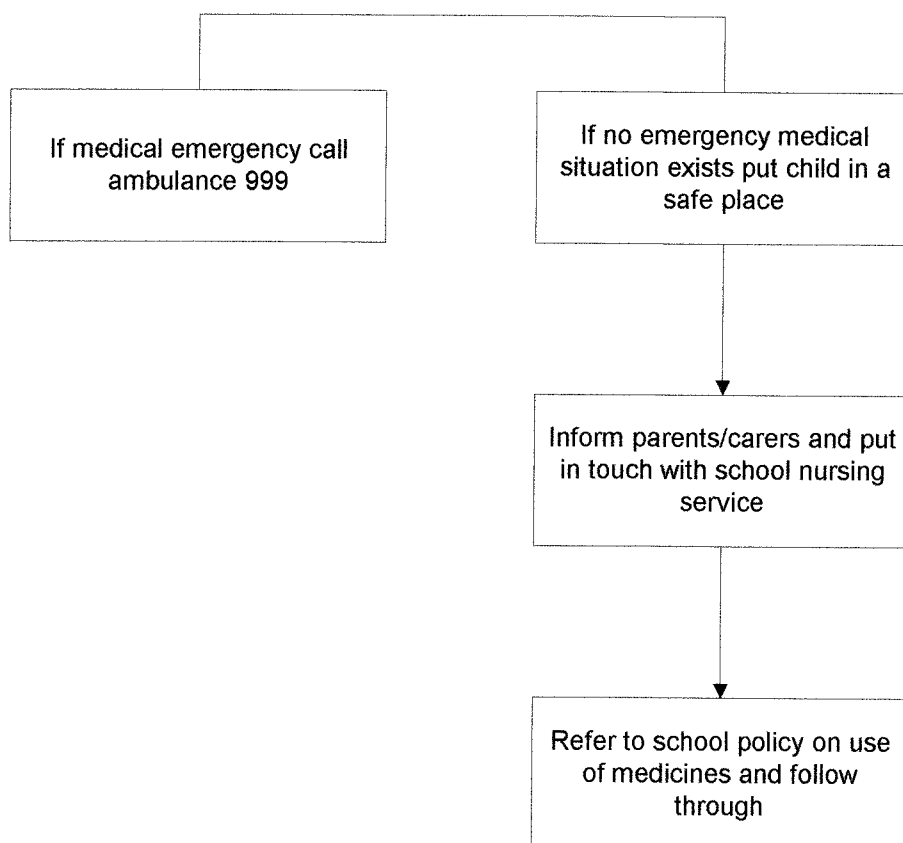


### Pupil(s) under the influence of drugs/alcohol on school premises

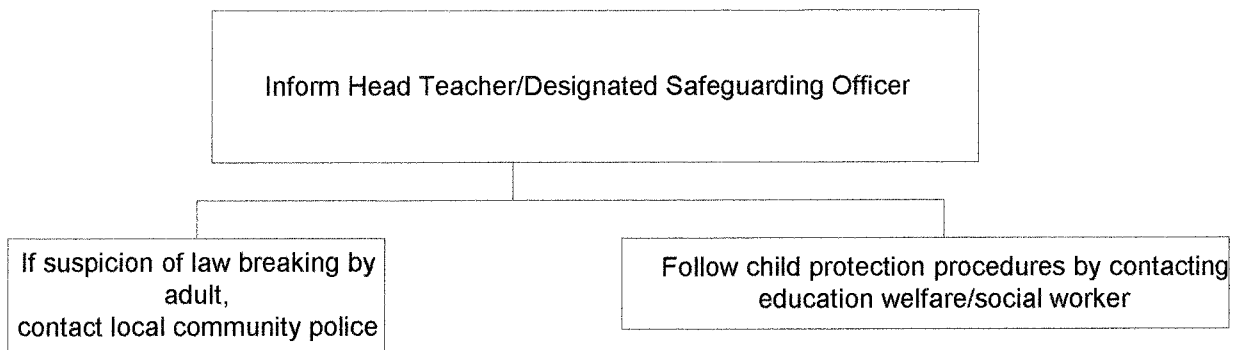
**N.B. If tobacco is the drug used you may wish to follow school behaviour/discipline policy.**



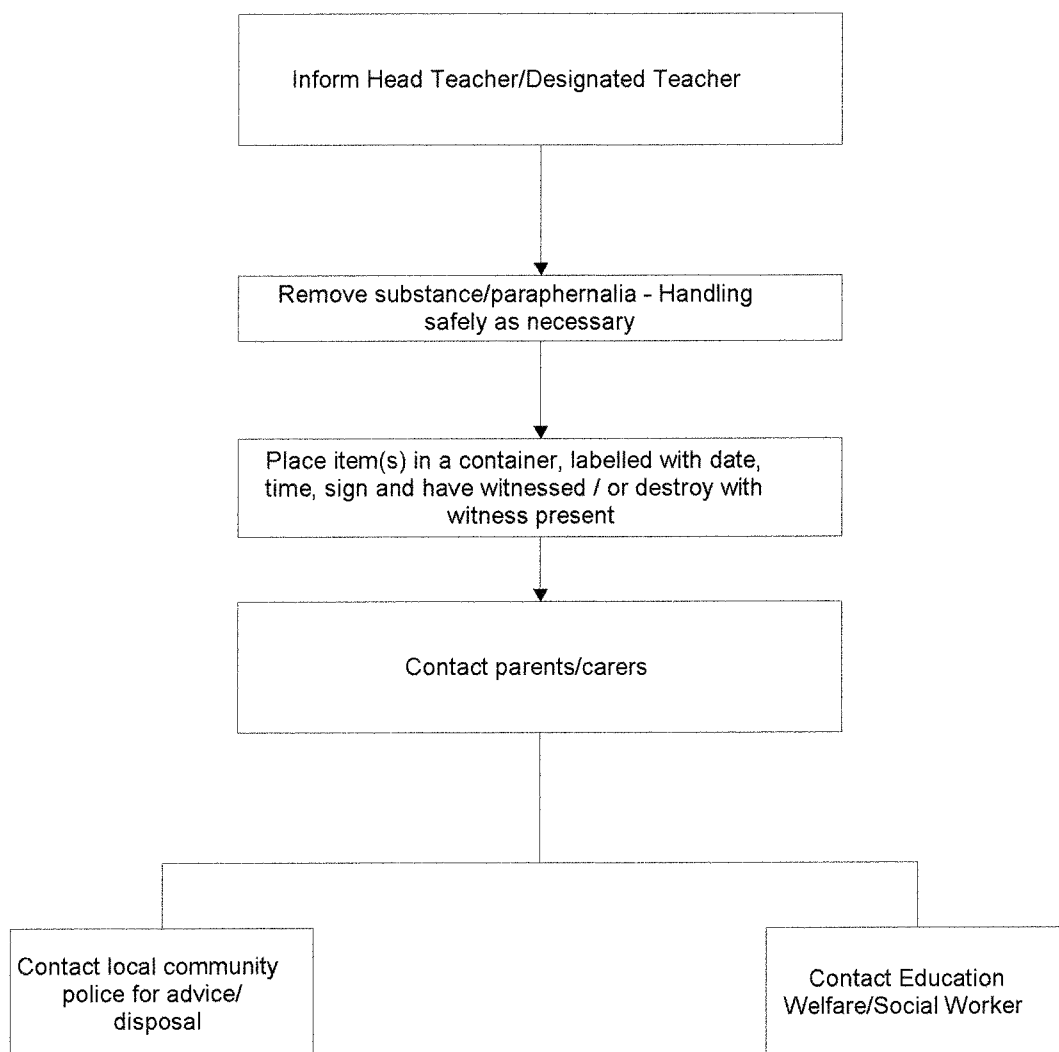
### Pupils using medicines inappropriately on school premises



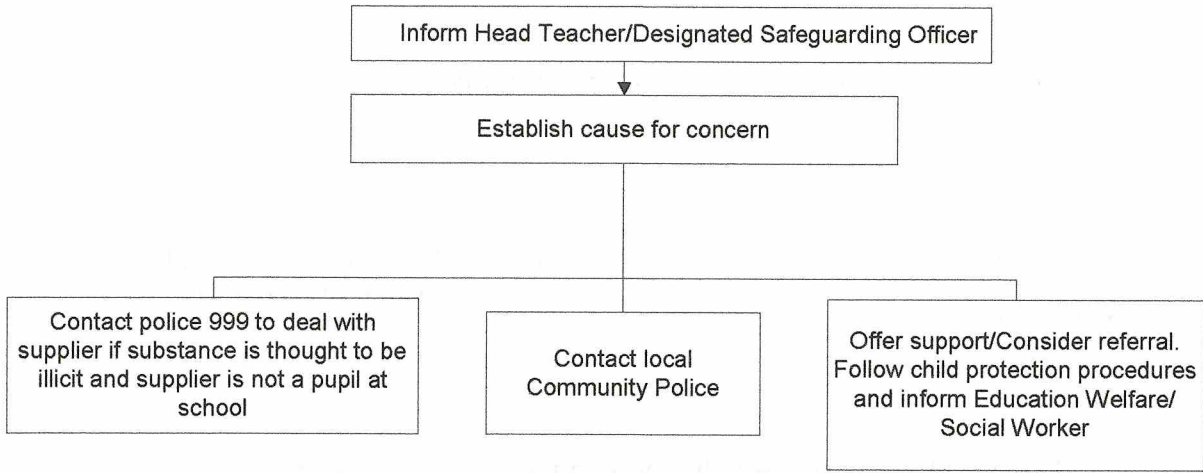
**Pupil makes disclosure about their own or parents/carers/others use of drugs/alcohol**



**Drugs and / or paraphernalia found on pupils and/or premises**



**Supplying of drugs/alcohol/tobacco by pupils/parents/carers/others**



**Approval and Review Record**

Policy Approved by Governors on (date).....25/11/21.....

Signed by Chair of Governing Body/Committee:.....[Signature].....

(date).....25/11/21.....

Due for Review by Governors (date).....Autumn 2024.....